



Stability Trending

The final dot in your paperless lab



Overview

- Epiatech Stability Trending module is a vendor independent solution for establishing and monitoring of Stability Trends.
- Standalone Windows application developed for known customer connects to two different LIMS Systems from different vendors.
- Collects LIMS data based on defined query parameters, calculates Stability limits for required Quality Attributes and creates reports according specifications.
- Solves the problem of different test names during longer periods.
- Automated limit evaluations implemented as separate activity and are LIMS System specific.

Get Stability Data from LIMS

Stability Data is extracted from LIMS System using query criteria that also defines trending group - what goes together.

Define Query

Filters (0)

Product Code	Sample Type	Lot	Study	Study Type	Packaging (S	Start Date	Orient	Storage	Timepo	Requester Co	Sample
	STABILITY D...		07SD20070054	SD	BP-AL-XXX...	2007-06-01	n/a	3075	1M		07335471
	STABILITY D...		07SD20070054	SD	BP-AL-XXX...	2007-06-01	n/a	3075	3M		07341747
	STABILITY D...		07SD20070054	SD	BP-AL-XXX...	2007-06-01	n/a	3075	6M		07353849
	STABILITY D...		07SD20070034	SD	BP-AL-XXX...	2007-05-10	n/a	3075	9M		07361719
	STABILITY D...		07SD20070054	SD	BP-AL-XXX...	2007-06-01	n/a	3075	9M		07364397
	STABILITY D...		07SD20070092	SD	BP-AL-XXX...	2007-11-28	n/a	3075	3M		07364389
	STABILITY D...		07SD20070093	SD	BP-AL-XXX...	2007-11-30	n/a	3075	3M		07364387
	STABILITY D...		07SD20070034	SD	BP-AL-XXX...	2007-05-10	n/a	3075	12M		07373029
	STABILITY D...		07SD20070054	SD	BP-AL-XXX...	2007-06-01	n/a	3075	12M		07375597
	STABILITY D...		07SD20070092	SD	BP-AL-XXX...	2007-11-28	n/a	3075	6M		07375589
	STABILITY D...		07SD20070093	SD	BP-AL-XXX...	2007-11-30	n/a	3075	6M		07375587
	STABILITY D...		07SD20070091	SD	BP-AL-XXX...	2007-11-28	n/a	3075	6M		07375591
	STABILITY D...		07SD20070092	SD	BP-AL-XXX...	2007-11-28	n/a	3075	9M		07386877
	STABILITY D...		07SD20070093	SD	BP-AL-XXX...	2007-11-30	n/a	3075	9M		07386873
	STABILITY D...		07SD20080053	SD	BP-AL-XXX...	2008-07-15	n/a	3075	T0		07388599
	STABILITY D...		07SD20080054	SD	BP-AL-XXX...	2008-07-15	n/a	3075	T0		07388612
	STABILITY D...		07SD20080055	SD	BP-AL-XXX...	2008-07-15	n/a	3075	T0		07388615
	STABILITY D...		07SD20080063	SD	BP-AL-XXX...	2008-07-24	n/a	3075	T0		07388638
	STABILITY D...		07SD20080054	SD	BP-AL-XXX...	2008-07-15	n/a	3075	3M		07392334
	STABILITY D...		07SD20080055	SD	BP-AL-XXX...	2008-07-15	n/a	3075	3M		07392332
	STABILITY D...		07SD20080053	SD	BP-AL-XXX...	2008-07-15	n/a	3075	3M		07392336

Search

OK Cancel

Limit Calculation

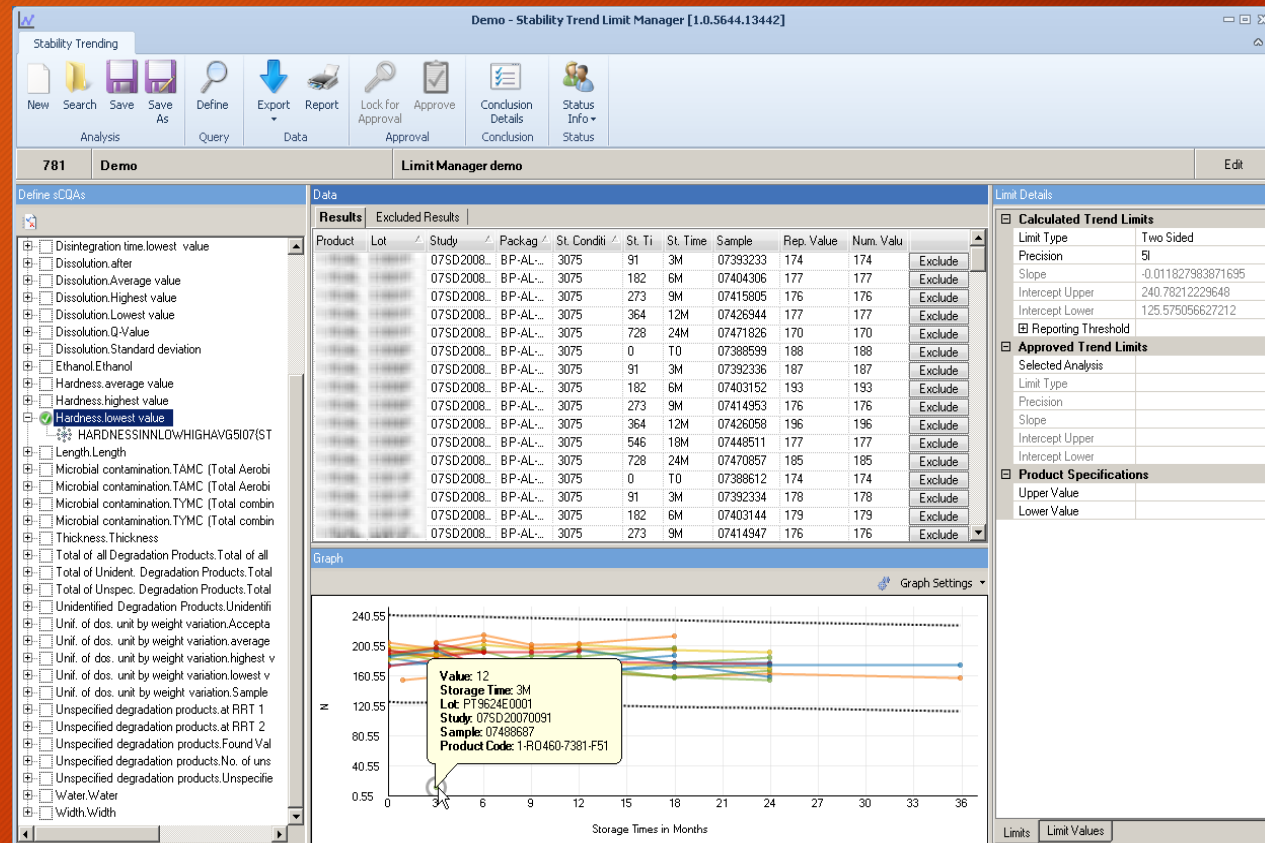
Once data is extracted from LIMS System it is presented to the user in well designed user interface.

Left side lists Stability Quality Attributes (tests) and application allows grouping of different tests under same name

By selecting individual Quality Attribute, Application calculates stability trend limits based on available data.

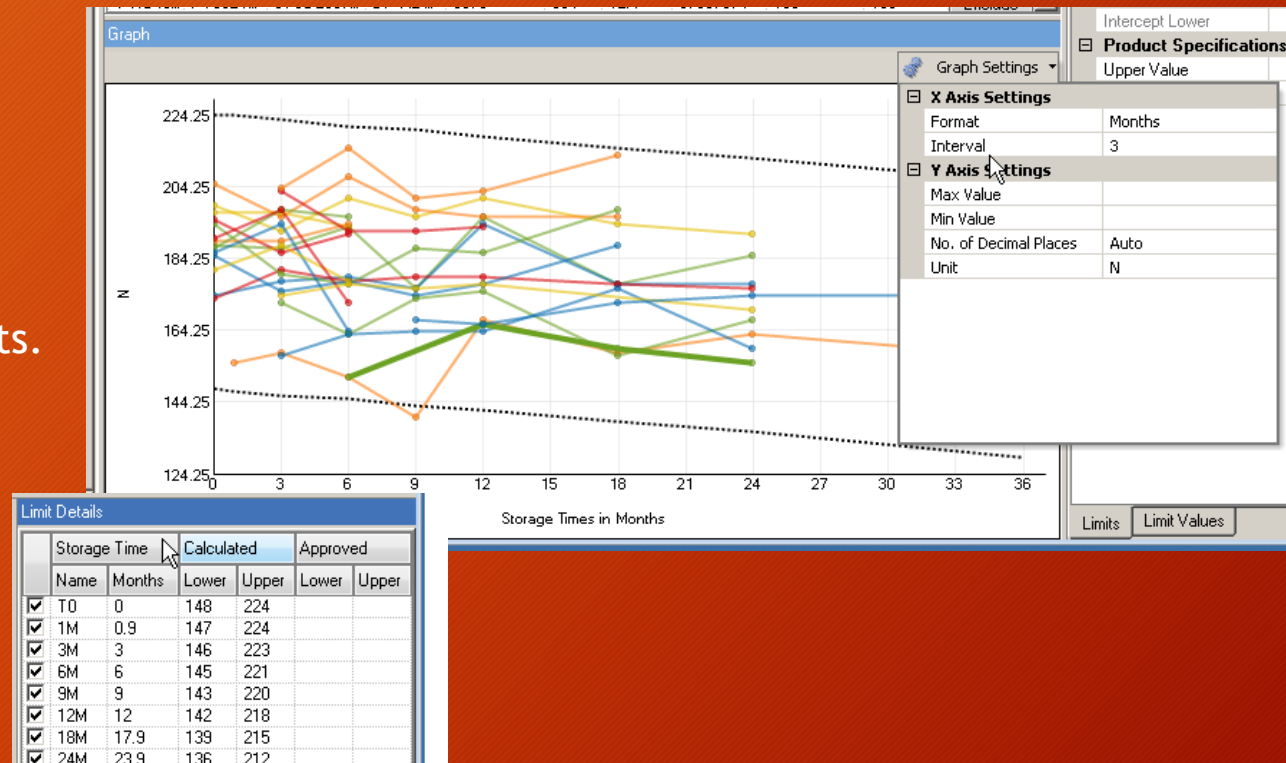
Data with calculated stability trend limits is displayed in the chart.

Many other features: data exclusion with eSignature, entering conclusions for report, final approval, data export, ...

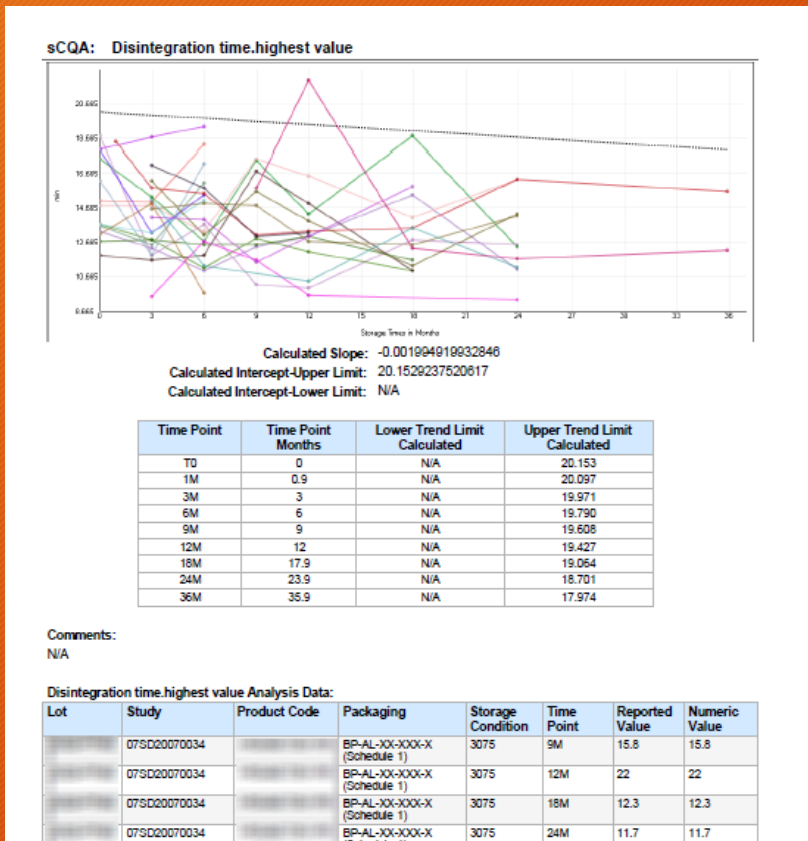


Data with Limits displayed

Chart displays data and stability limits.
Many chart configuration options are available to configure chart output.



Report (PDF) and Export (XLS)



New export.xls [Compatibility Mode] - Microsoft Excel Viewer

	A	B	C	D	E	F	G	H	I	J	K	L	M
1	Disintegration time.highest value												
2													
3	Product Code	Lot	Study	Packaging (Schedule)	Storage Condition	Study Type	Sample Type	Orientation	Sample	Timepoint	Timepoint Days	Reported Value	Numeric Value
4			07SD20070034	BP-AL-XX-XXX-X (Schedule 1)	3075	SD	STABILITY DEVELOPMENT	n/a	07361719	9M	273	15.8	15.8
5			07SD20070034	BP-AL-XX-XXX-X (Schedule 1)	3075	SD	STABILITY DEVELOPMENT	n/a	07373029	12M	364	22	22
6			07SD20070034	BP-AL-XX-XXX-X (Schedule 1)	3075	SD	STABILITY DEVELOPMENT	n/a	07394884	18M	546	12.3	12.3
7			07SD20070034	BP-AL-XX-XXX-X (Schedule 1)	3075	SD	STABILITY DEVELOPMENT	n/a	07417411	24M	728	11.7	11.7
8			07SD20070034	BP-AL-XX-XXX-X (Schedule 1)	3075	SD	STABILITY DEVELOPMENT	n/a	07462521	36M	1092	12.2	12.2
9			07SD20070054	BP-AL-XX-XXX-X (Schedule 1)	3075	SD	STABILITY DEVELOPMENT	n/a	07335471	1M	28	18.45	18.45
10			07SD20070054	BP-AL-XX-XXX-X (Schedule 1)	3075	SD	STABILITY DEVELOPMENT	n/a	07341747	3M	91	15.83	15.83
11			07SD20070054	BP-AL-XX-XXX-X (Schedule 1)	3075	SD	STABILITY DEVELOPMENT	n/a	07353849	6M	182	15.5	15.5
12			07SD20070054	BP-AL-XX-XXX-X (Schedule 1)	3075	SD	STABILITY DEVELOPMENT	n/a	07364397	9M	273	13.1	13.1
13			07SD20070054	BP-AL-XX-XXX-X (Schedule 1)	3075	SD	STABILITY DEVELOPMENT	n/a	07375597	12M	364	13.3	13.3