



# ECM Interface

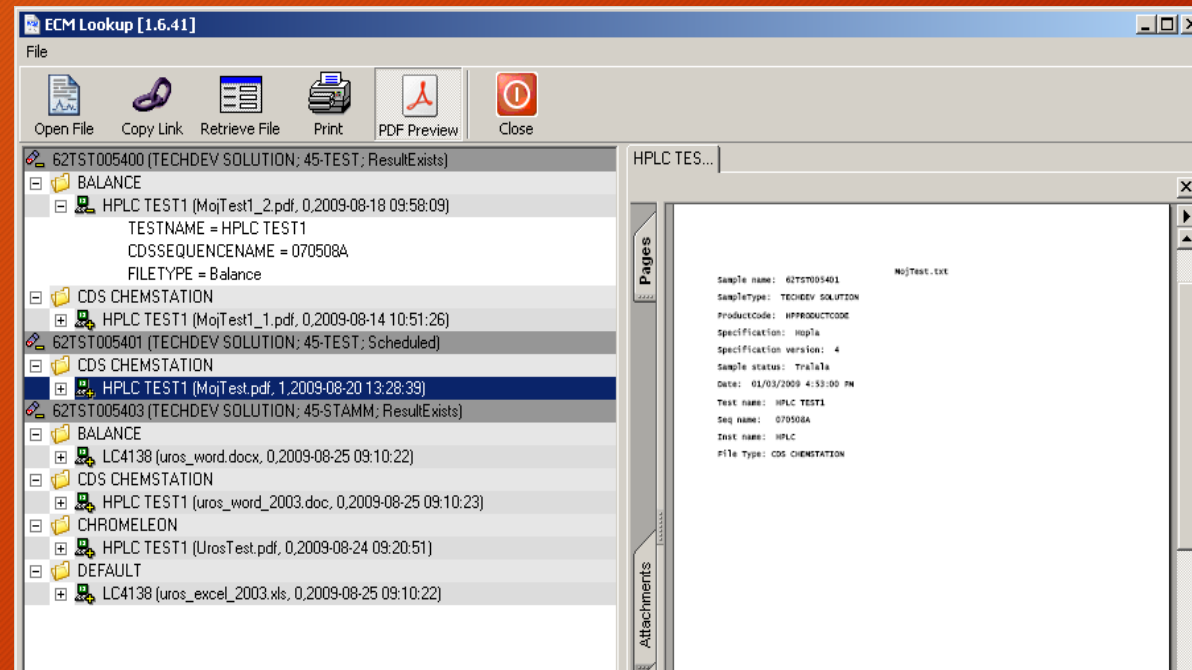
# Overview

- Challenge: Most of Instrument Systems produce reports of various forms and formats. How can we get to these reports from LIMS System?
- Solution:
  - Reports are automatically collected by core features of ECM System.
  - Every report (type) contains unique LIMS Sample identifier that is extracted from report by ECM System.
  - Custom database (Oracle) mechanism implemented by Epiatech that links reports to LIMS Sample ID's.
  - Custom LIMS extension implemented by Epiatech that searched for applicable reports and brings them to LIMS by using ECM System API.

# Reports from ECM displayed in LIMS

Based on selected Sample, module identifies related ECM documents and lists them by different Instrument Systems.

Selected report is fetched from ECM and displayed within the module. Document may be printed or downloaded locally.



# ECM to LIMS on the Web

Most of functionalities of Windows application has also been ported to Web environment

