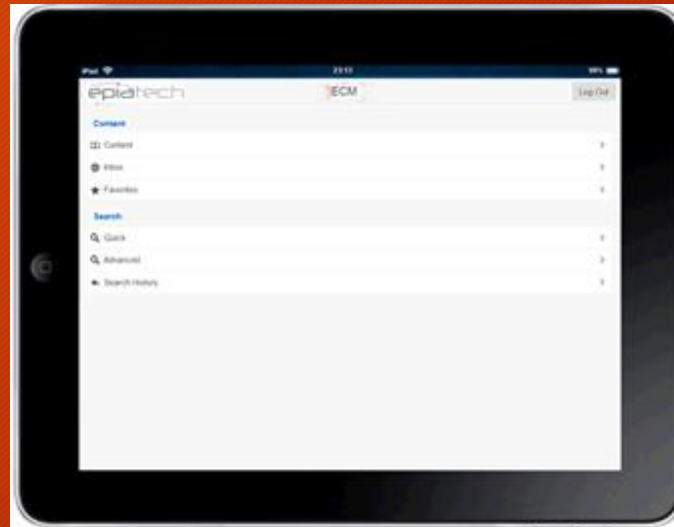
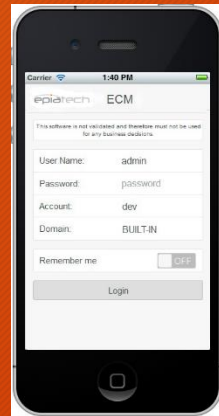




Enterprise Content Management Mobile

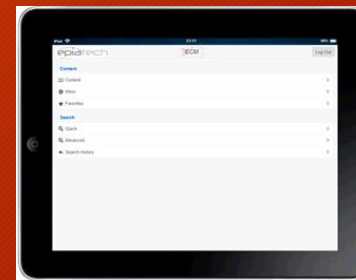
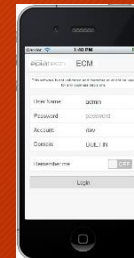
ECM Mobile Introduction - What is it?

- Mobile solution on top of recognized ECM system
- It's HTML5 / Web based application.
- It runs on any modern mobile device or tablet with installed Web browser.



ECM Mobile Introduction - Benefits

- Light client - no custom client components
- Enable access for a Mobile devices



ECM Mobile Technical Design

- HTML5 Web based - ASP.NET MVC (Model View Controller)
- Telerik Kendo Web Controls (<http://www.telerik.com/kendo-ui>)
- Single HTML page with “views”
- Hosted on IIS- can be deployed on existing ECM Web server or on a separate IIS Server - independent of existing, validated system.
- Dependencies
 - ECM client components
 - Oracle Client
 - Oracle database tables - can be created in a separate schema with read-only access to the ECM schema.

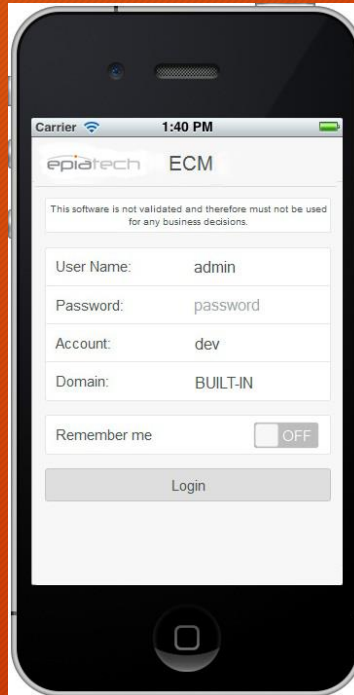
ECM Mobile

User Interface - Functionalities

- Login with built-in or domain users credentials
- Browse LCDF - view file properties
- Inbox
 - Retention
 - BPM Inbox
- Search
 - Quick
 - Advanced
- Custom Favorites

ECM Mobile User Interface - Login

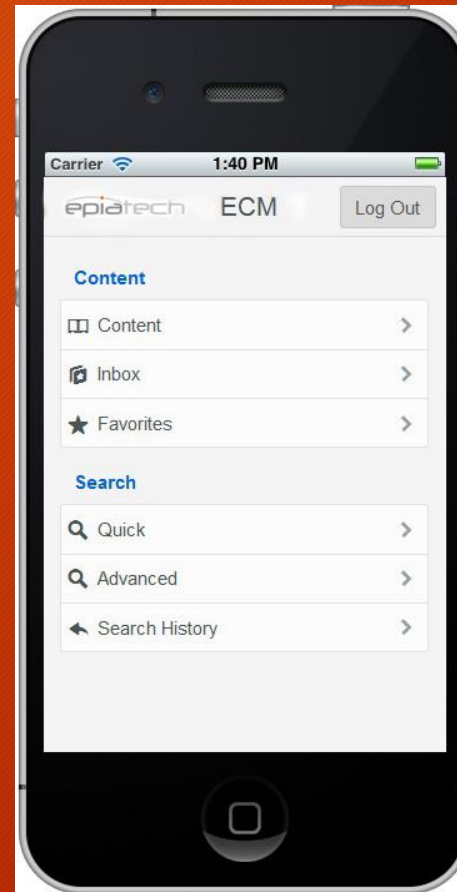
Enter user name and password



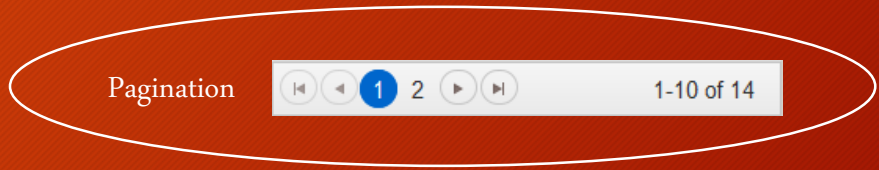
Could be "built-in" user or domain user

ECM Mobile Main Window

- Main window for the ECM Mobile offers the following functionalities:
- Content
 - Browse LCDF
 - Inbox for retention and BPM tasks
 - Favorites
- Search
 - Quick
 - Advanced
 - Search History



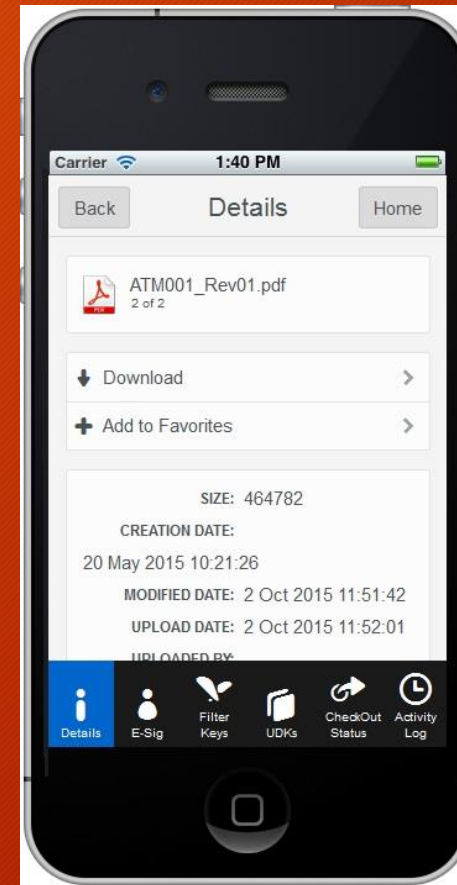
ECM Mobile Browse LCDF - Content



ECM Mobile

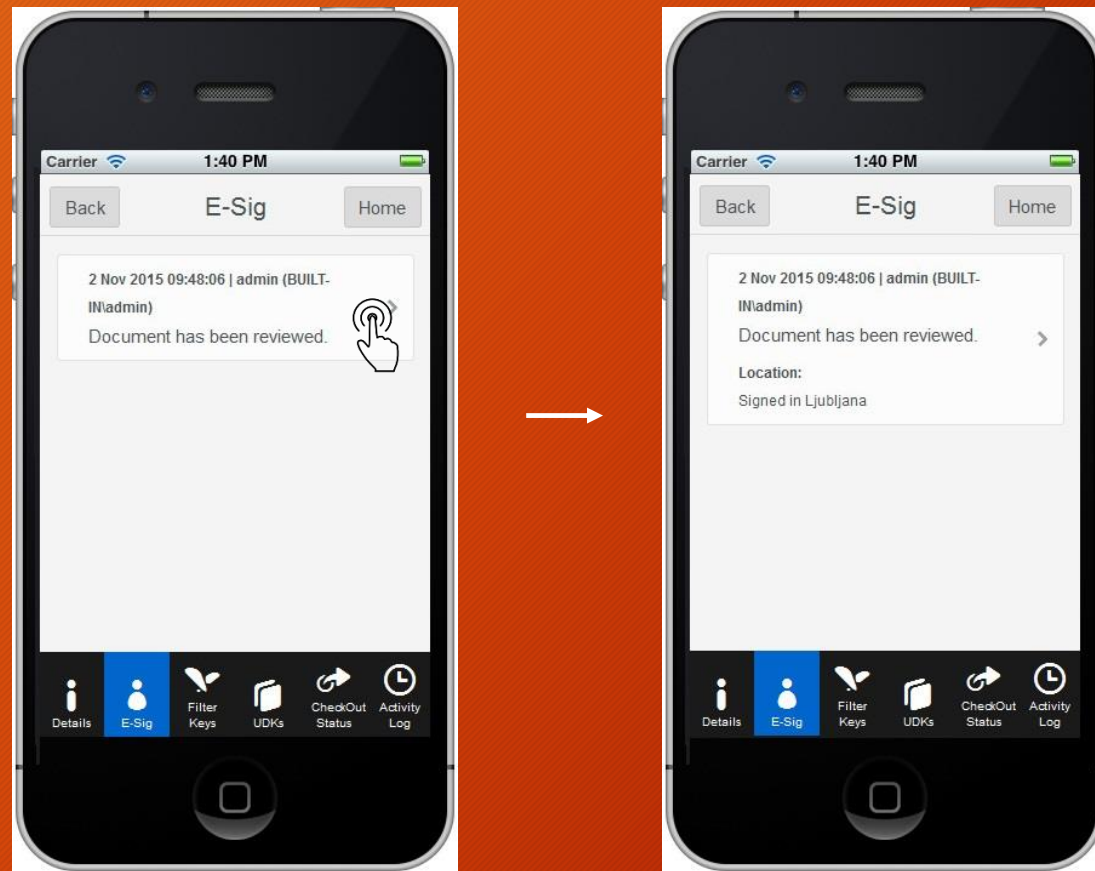
File properties - Details

- File properties
 - Basic file information (same as in ECM)
 - Details
 - File download
 - Add files to favorites
 - E-Signature
 - Filter Keys
 - UDK's
 - Check Out status
 - Activity Log



ECM Mobile

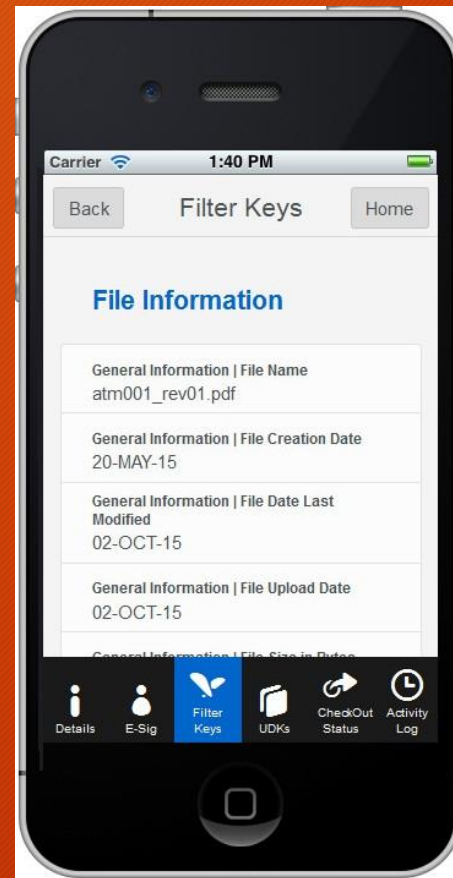
File properties - eSignature



The final dot in your paperless lab

ECM Mobile

File properties - Filter Keys

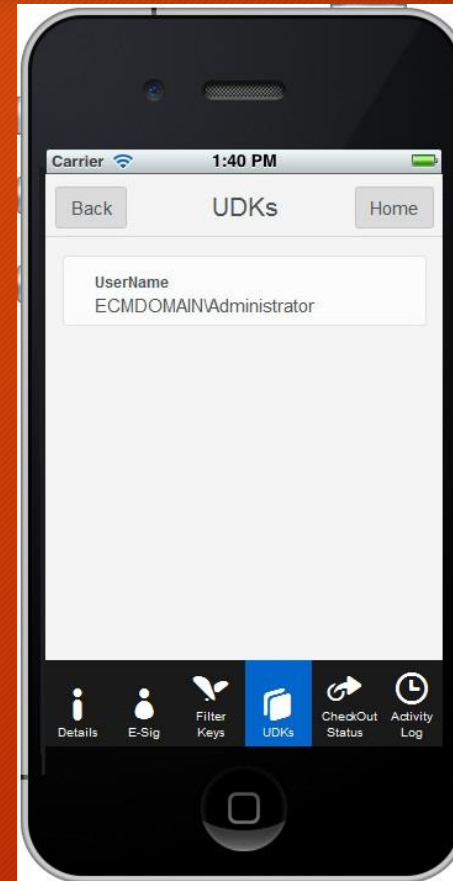


ECM Mobile

File properties - User Defined Keys

- File user defined keys (UDK's)

Example shows
"UserName" as a UDK assigned to a file



ECM Mobile

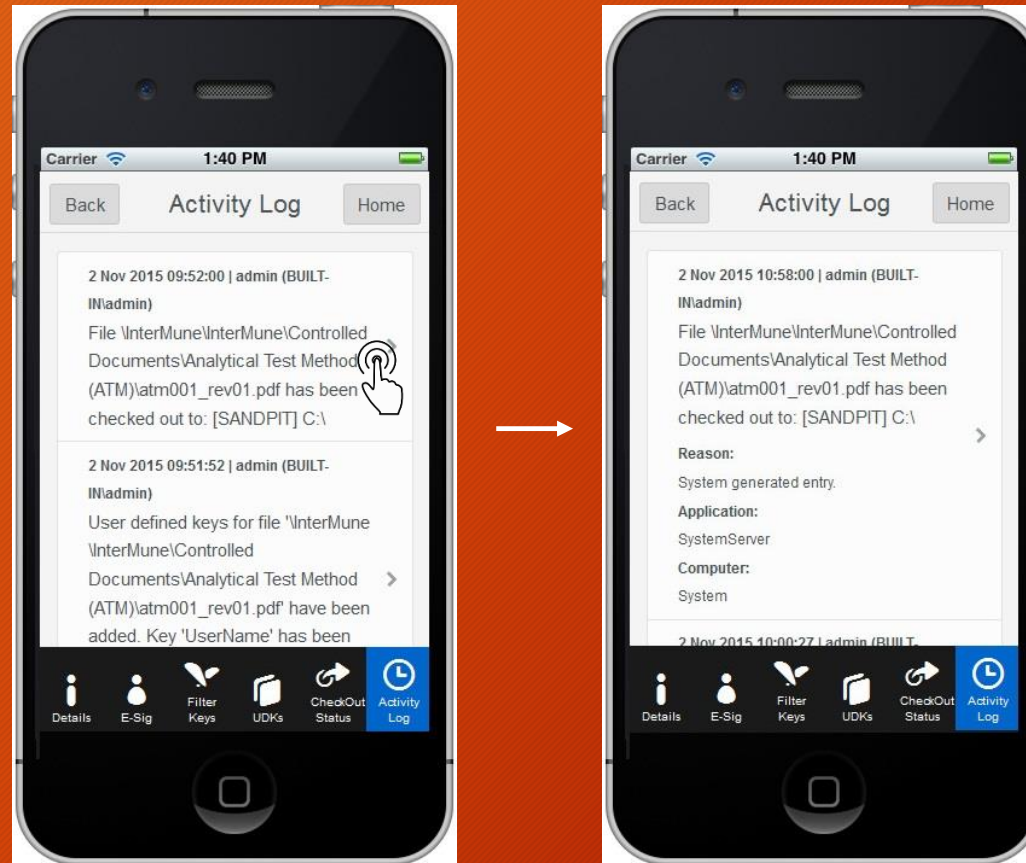
File properties - Check Out Status



The final dot in your paperless lab

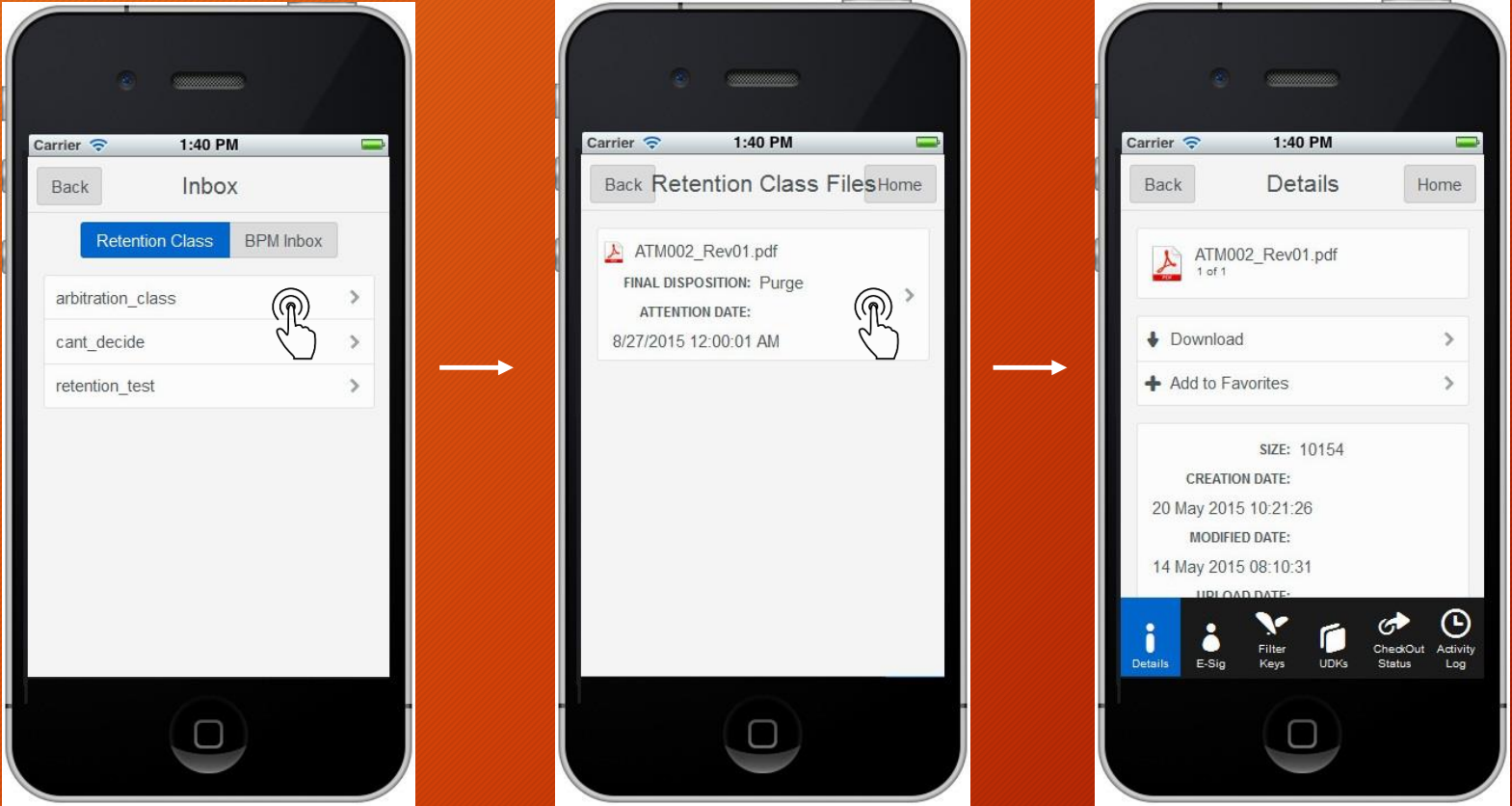
ECM Mobile

File properties - Activity Log



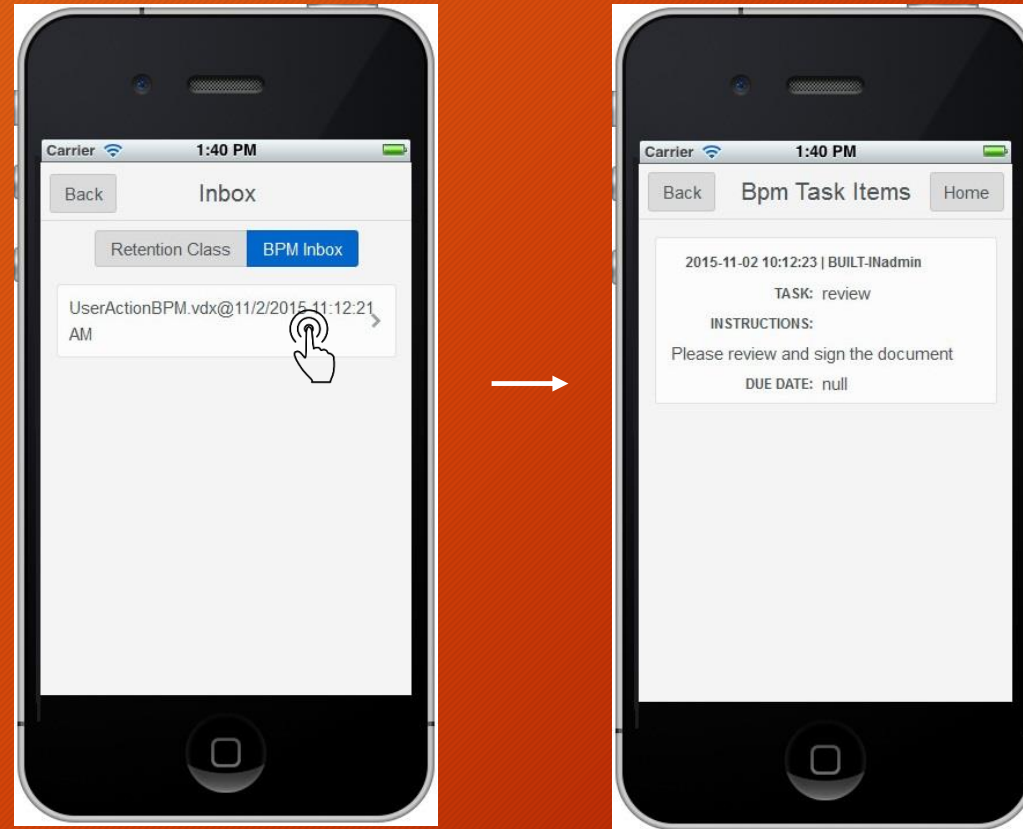
The final dot in your paperless lab

ECM Mobile Inbox- Retention



The final dot in your paperless lab

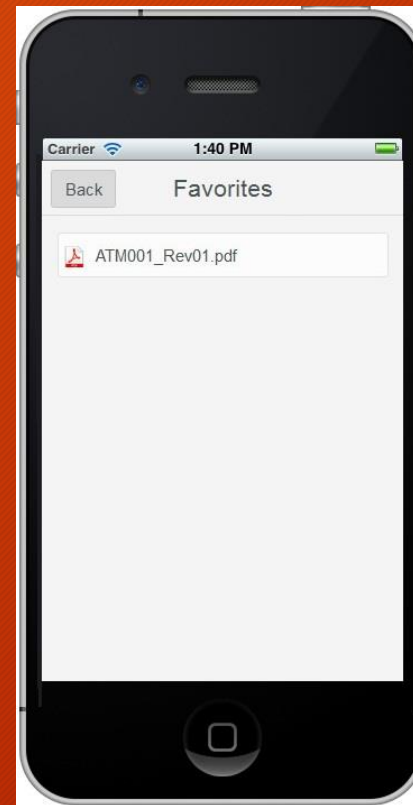
ECM Mobile Inbox- BPM



The final dot in your paperless lab

ECM Mobile Favorites

- User can save file into his/hers favorite folder. This files are added independently of the ECM application and are visible only on a mobile ECM.



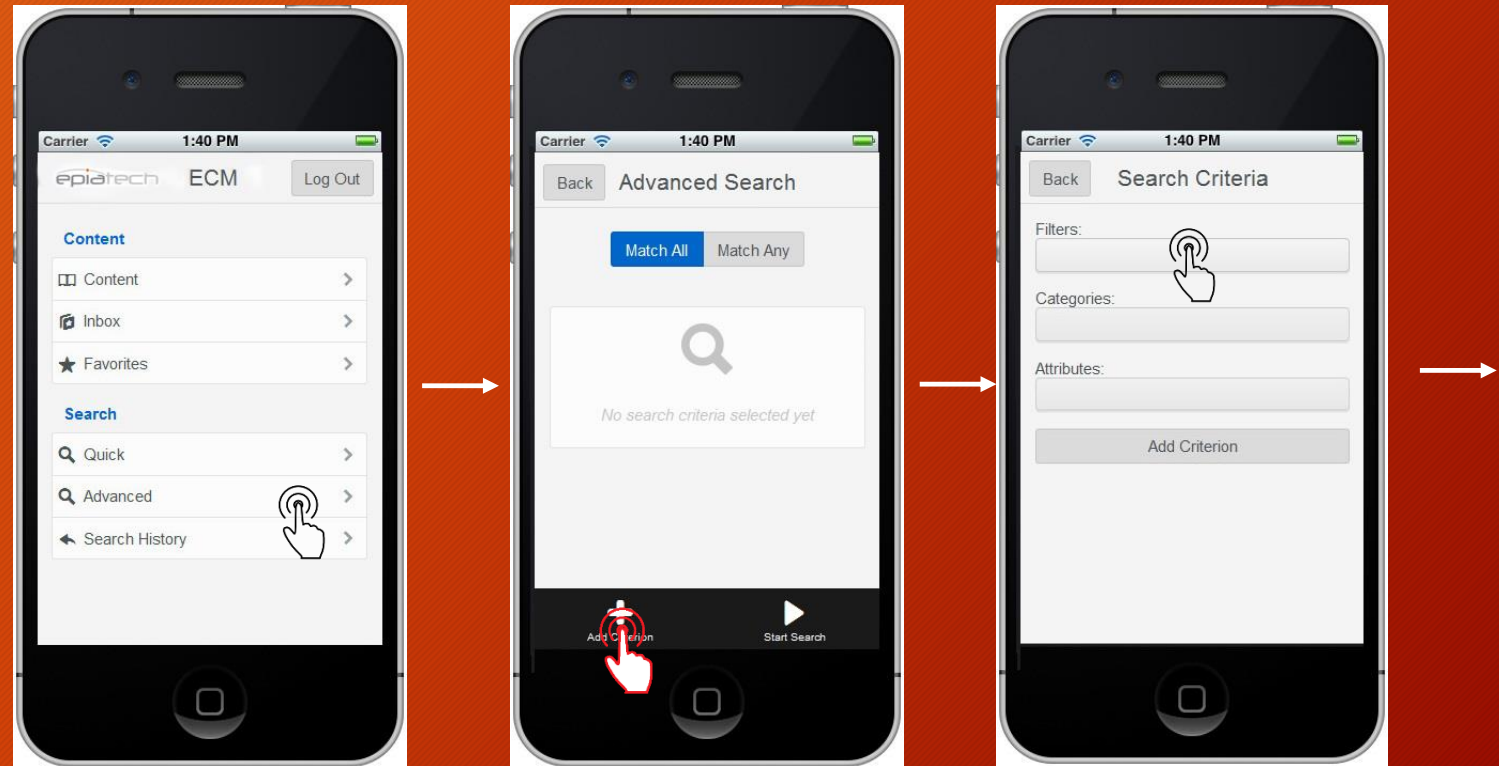
ECM Mobile Search - Quick

Quick search - asynchronous search with possibility to abort
After search is initiated search criteria is stored into the “Search History”



ECM Mobile Search - Advanced

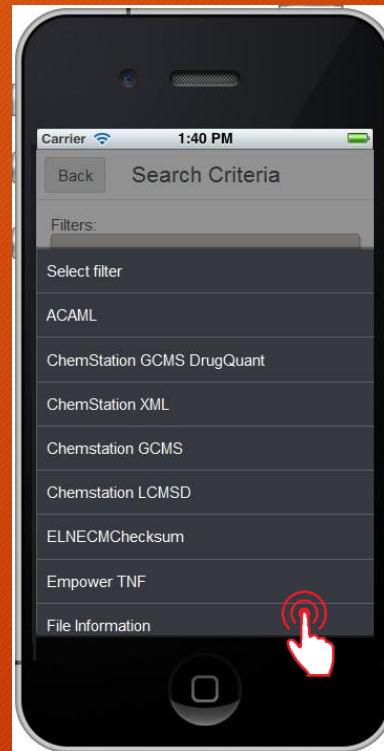
Advanced search offers the user to select Filter Keys and User defined keys to compose search criteria. User can select “Match All” or “Match Any” when specifying more than one search criteria.



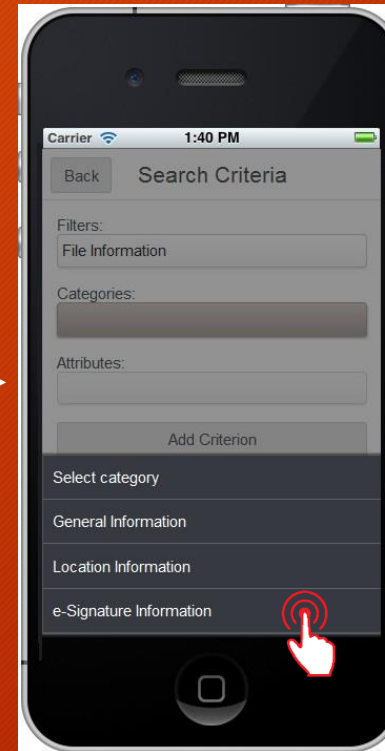
ECM Mobile Search - Advanced

Advanced search also stored search criteria into the “Search History”
Only search criteria is stored, search results are NOT saved.

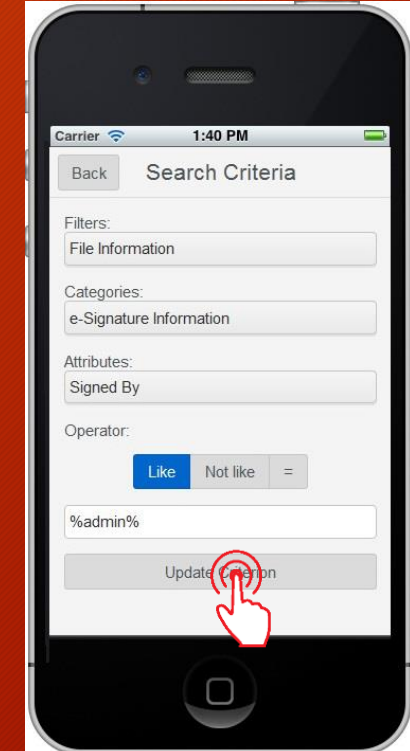
Select filter name/template



Select filter category



Select attribute and type a value



ECM Mobile Search - Advanced

Search is executed asynchronously and can be aborted at any time

Search results

